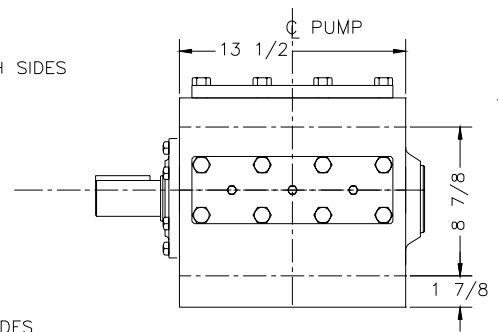
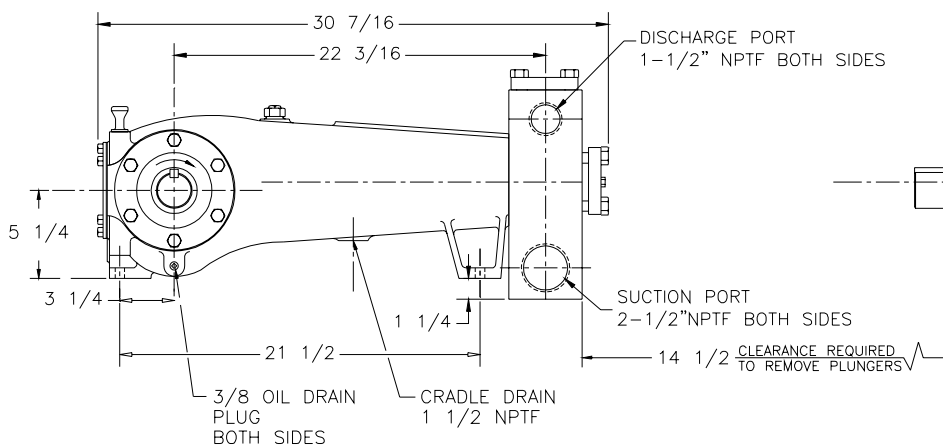
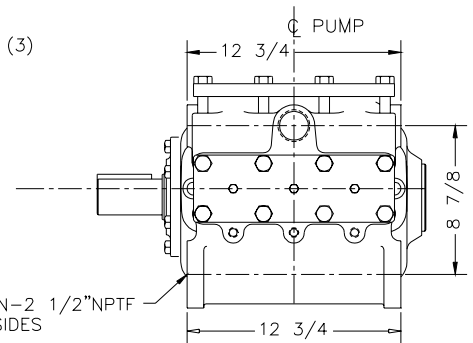
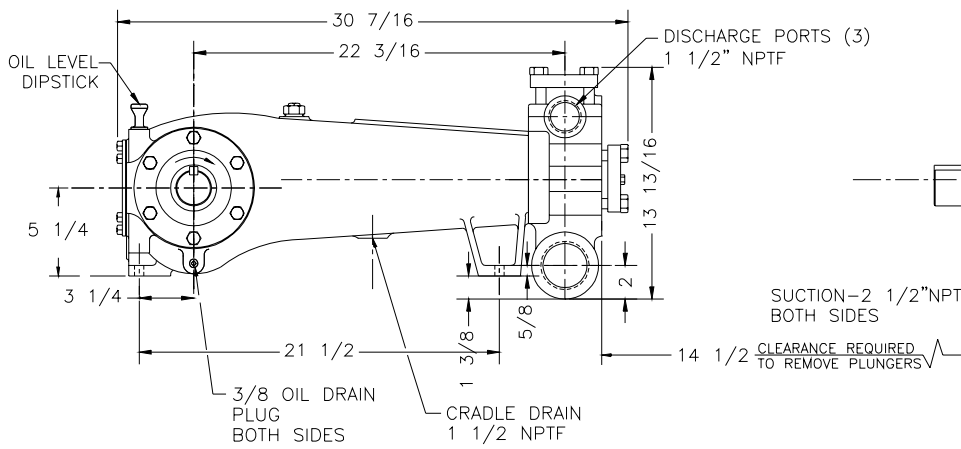
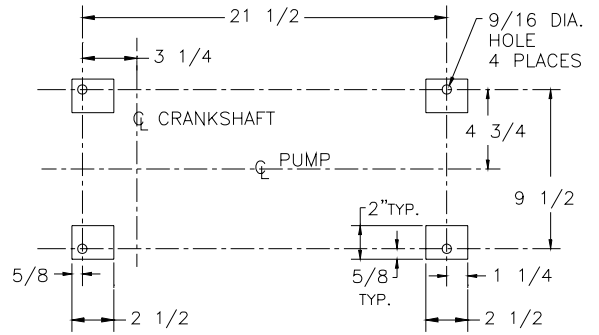
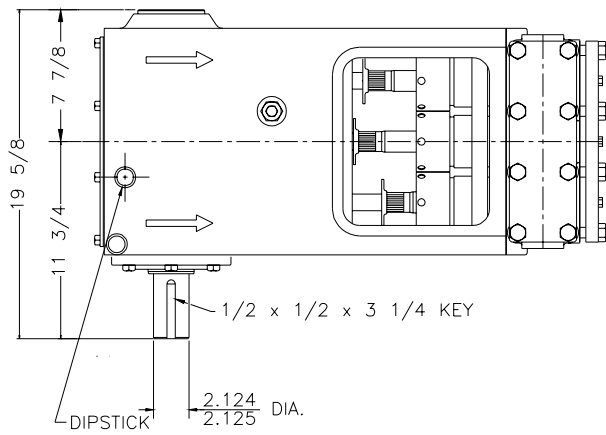


SC-45L Triplex Pump



ENGINEERING DATA

SC-45L Triplex Pump

POWER END ENGINEERING DATA

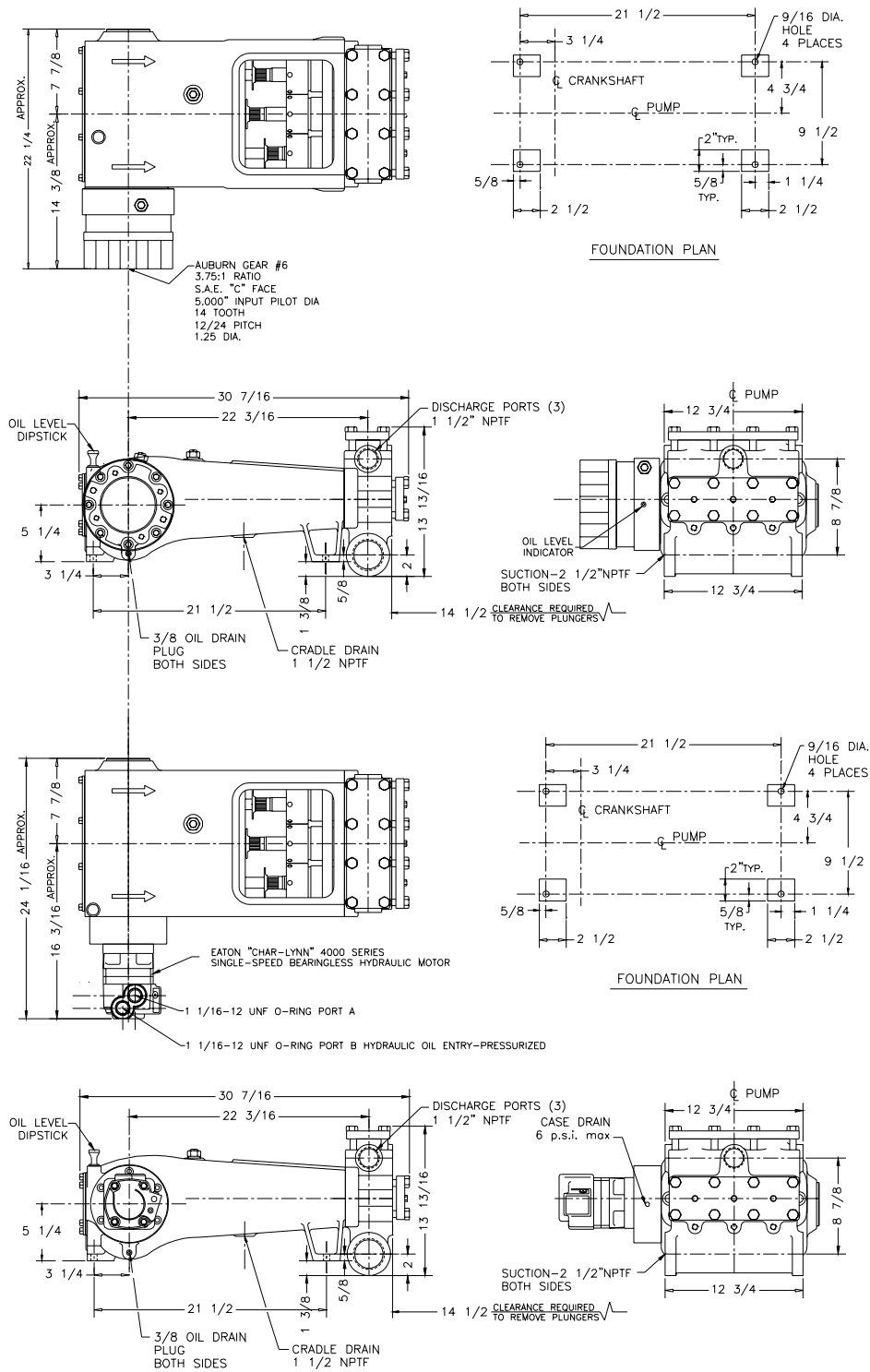
Max. Input HP @ Speed	60 HP @ 600 rpm
Rated Continuous Plunger Load	5,280 lb.
Normal Continuous Speed Range	150 to 500 rpm
Minimum Speed	100 rpm
Oil Capacity	5 U.S. Qrts
Power End Oiling System	Splash & Scoop
Power Frame, One-Piece	Cast Iron
Crosshead, Full Cylindrical	Cast Iron
Crosshead, Dia. x Length	3 1/4 x 3 5/8 in.
Crankshaft	Ductile Iron
Crankshaft Diameters:	
At Tapered Roller Bearings	3.15 in.
At Crankpin Bearings	2.25 in.
Crosshead (Wrist) Pin, Case-Hardened and Ground	AISI 8620
Main Bearings, Tapered Roller	Timken
Crankpin Bearings, Precision Automotive	Babbitt-Lined
Extension (Pony) Rod, Integral w/ Plungers	416 S.ST.
Connecting Rod, Automotive Type	Ductile Iron
Average Crosshead Speed @ 600 rpm	225 fpm
Minimum Life Expectancy, Main Bearings, L ₁₀	15,000+ hr.

LIQUID END ENGINEERING DATA

Max. Continuous Working Pressure	1,683 psi
Hydrostatic Test	2,500 psi
Liquid End Materials, A.S.T.M.	
Ductile Iron	A536 80-55-06
Carbon Steel Block	A516 Gr. 70
Stainless Steel Block	316 or 2205 S.ST.
Piston Cup	HSN and Kevlar
Liner	White Ceramic
Plunger Chromium Oxide-Coated	416 S.ST.
Packing Types Available	
Gland Adjustable, Braided Teflon and Kevlar	HI/LO
Gland-loaded, Non-Adjustable	Style 858
Spring-loaded, Braided Teflon & Kevlar	Style 140
Spring-loaded, Garlock	Style 892IK
Retainer Plates, Steel, A.S.T.M.	A36
Seals, Stuffing Boxes, Valve Covers	Buna-N
Bolting, High Strength, Heat Treated	Alloy Steel
Valve Types Available	
Standard, Abrasion Resistant	17-4PH S.ST.
Optional, Disc, Hardened and Lapped	17-4PH S.ST.
Valve Spring Material	Inconel
Valve Seat, Liquid Passage Area	
Plate (disc) Valves, (Delrin or S.S.)	1.4 sq.in.
Abrasion Resistant Valve	0.958 sq.in.
Avg. Liquid Velocity with 2 1/4" plunger @ 600 rpm	
thru Disc Valves	6.5 fps
thru Abrasion Resistant Valves	9.8 fps
thru Suction Manifold	4.5 fps
thru Discharge Manifold	9.7 fps

All drawings and specifications subject to change without notice.

SC-45L Triplex Pump



1101 Myers Parkway
 Ashland, Ohio 4408-1969
 419/289-1144
 FAX: 419/289-6658
 www.myers-aplex.com
 myers-aplex@femyers.com

269 Trillium Drive
 Kitchener, Ontario N2G 4W5
 519/748-5470
 FAX: 519/748-2553