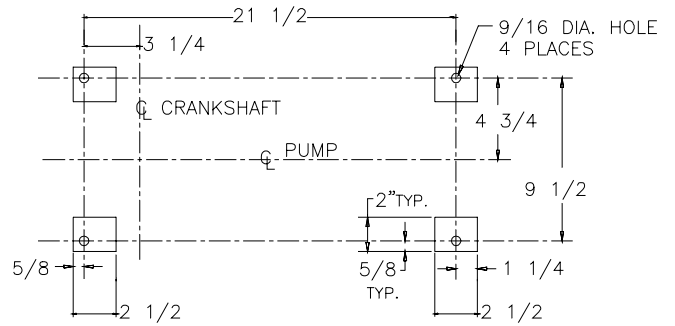
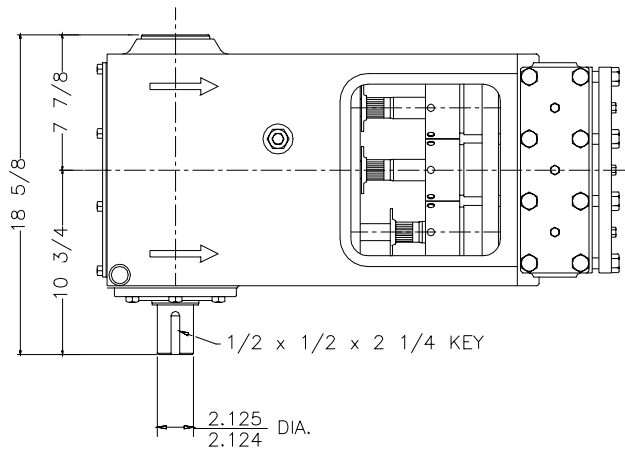
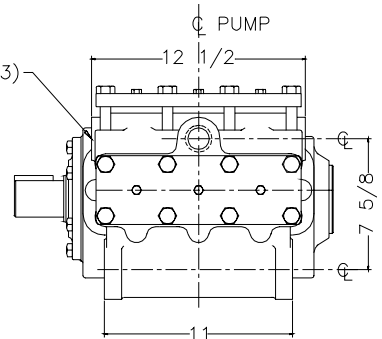
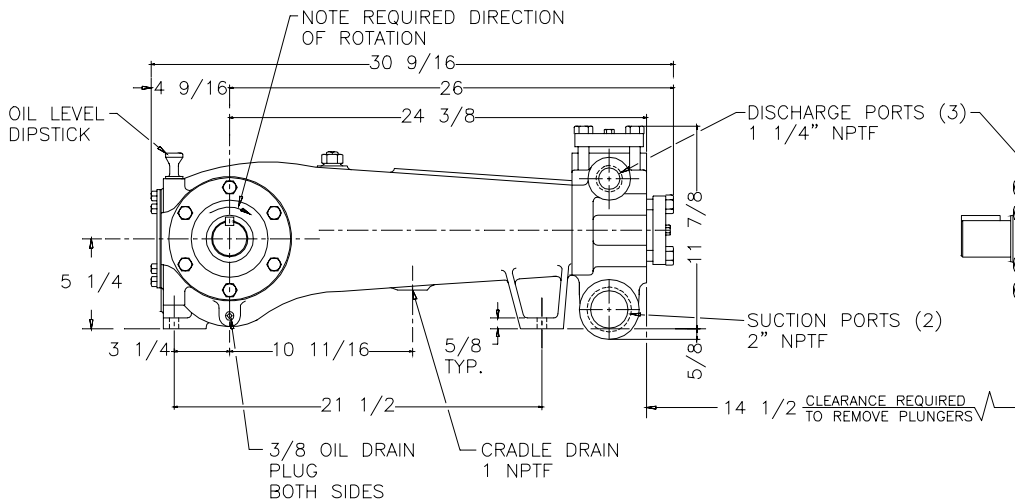
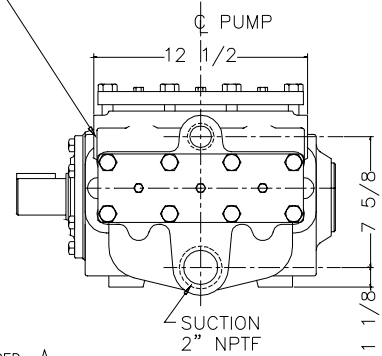
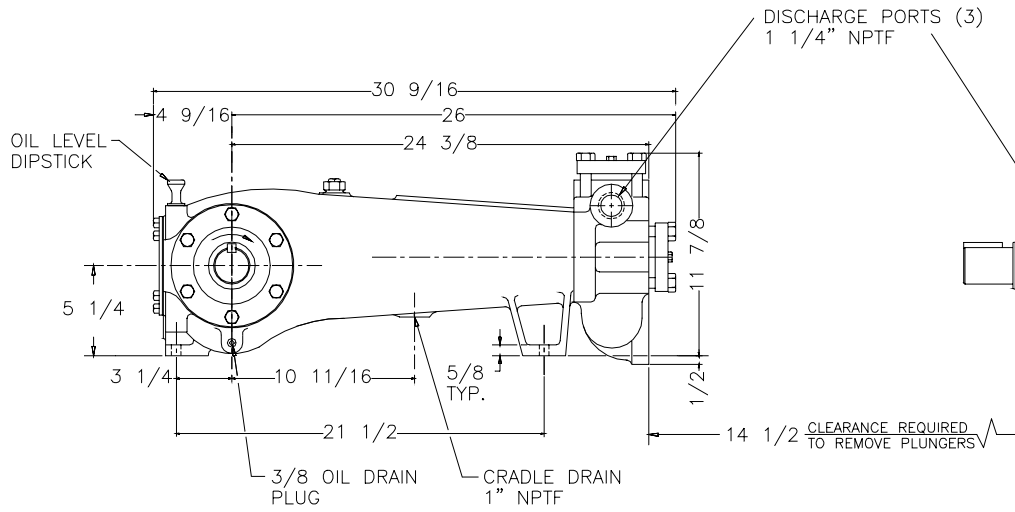


SC-45 Triplex Pump



FOUNDATION PLAN



ENGINEERING DATA

SC-45 Triplex Pump

POWER END ENGINEERING DATA

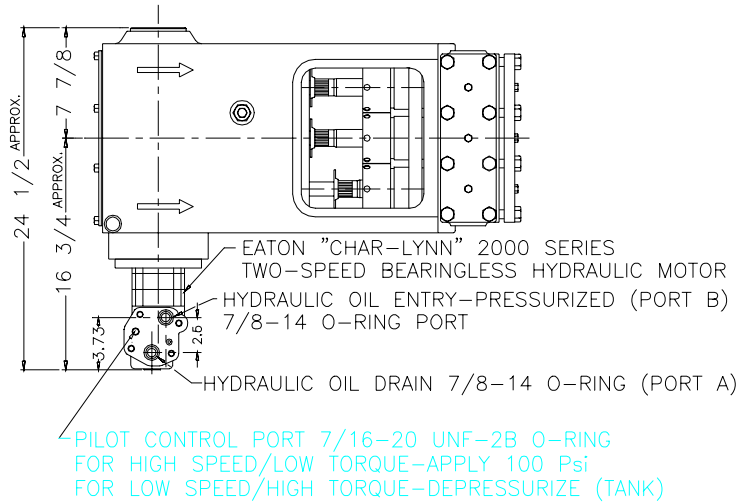
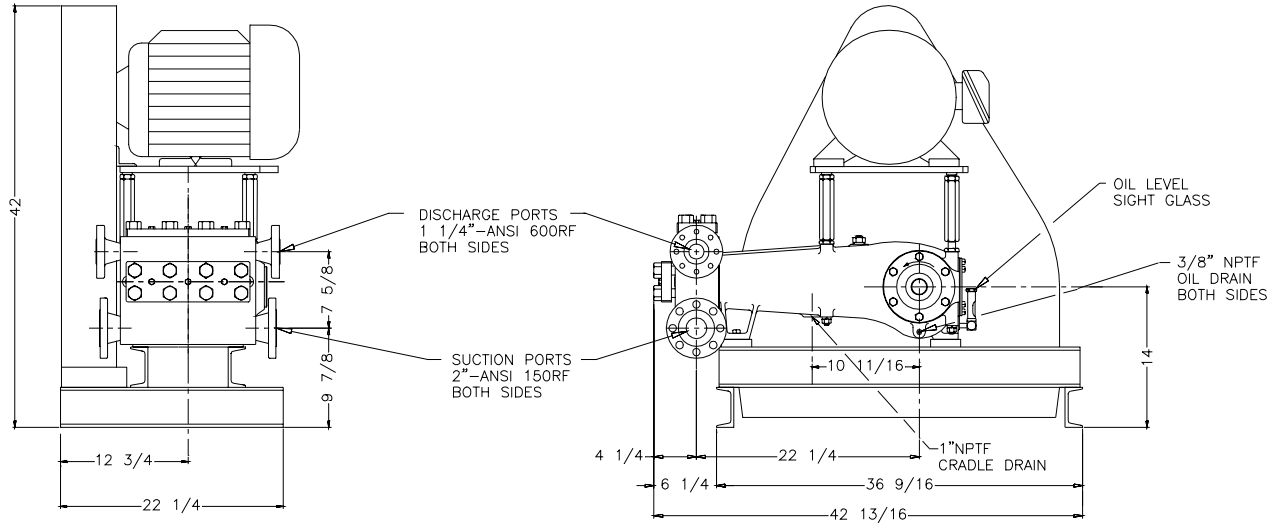
Max. Input Power @ Speed	60 HP @ 600 rpm
Rated Continuous Plunger Load	5,280 lb.
Normal Continuous Speed Range	150 to 600 rpm
Minimum Speed	100 rpm
Oil Capacity	5 U.S. Qrts
Power End Oiling System	Splash & Scoop
Power Frame, One-Piece	Cast Iron
Crosshead, Full Cylindrical	Cast Iron
Crosshead, Dia. x Length	3 1/4 x 3 5/8 in.
Crankshaft	Ductile Iron
Crankshaft Diameters:	
At Tapered Roller Bearings	3.15 in.
At Crankpin Bearings, Dia. x Length	2 1/4 x 1 5/8 in.
Crosshead (Wrist) Pin, Case-Hardened and Ground	AISI 8620
Main Bearings, Tapered Roller	Timken
Crankpin Bearings, Precision Automotive	Babbitt-Lined
Extension (Pony) Rod Integral w/ Plungers	316 S.ST.
Connecting Rod, Automotive Type	Ductile Iron
Average Crosshead Speed @ 600 rpm	225 fpm
Minimum Life Expectancy, Main Bearings, L ₁₀	15,000+ hr.

LIQUID END ENGINEERING DATA

Max. Continuous Working Pressure	3,500 psi
Hydrostatic Test	5,250 psi
Liquid End Materials, A.S.T.M.	
Ductile Iron	A536 80-55-06
Nickel Aluminum Bronze	B148 C955
Carbon Steel	A516 Gr.70
Stainless Steel	316 or 2205 S.ST.
Plunger Type "Rokide" Stainless Steel, (Chromium Oxide-Coated)	416 S.ST.
Stuffing boxes, Field-Removable and Replaceable, Carbon Steel	1020
Packing Types Available:	
Gland-loaded, Non-Adjustable	Style 838
Spring-loaded, Braided Teflon & Kevlar	Style 140
Spring-loaded, cup-type	Style 120X
Spring-loaded, Garlock	Style 892IK
Valve Cover and Cyl. Head Plugs	316 S.ST.
Retainer Plates, Steel, A.S.T.M.	A36
Seals, Stuffing Boxes, Valve Covers	Buna-N
Valve Type, Double Stem-Guided	17-4PH S.ST.
Valve Spring Material	Inconel
Valve Seat, Liquid Passage Area	
Plate (disc) Valves, (Delrin or S.S.)	1.400 sq.in.
Double Stem-Guided Valve958 sq.in.
Avg. Liquid Velocity, with 1 7/8" Plungers @ 600 RPM	
thru Plate Valves	7.40 fps
thru Dual Valves	10.81 fps
thru Suction Manifold	4.12 fps
thru Discharge Manifold	10.75 fps

All drawings and specifications subject to change without notice.

SC-45 Triplex Pump



Myers APLEX
INDUSTRIAL PUMP DIVISION

1101 Myers Parkway
Ashland, Ohio 4408-1969
419/289-1144
FAX: 419/289-6658
www.myers-aplex.com
myers-aplex@femyers.com

269 Trillium Drive
Kitchener, Ontario N2G 4W5
519/748-5470
FAX: 519/748-2553