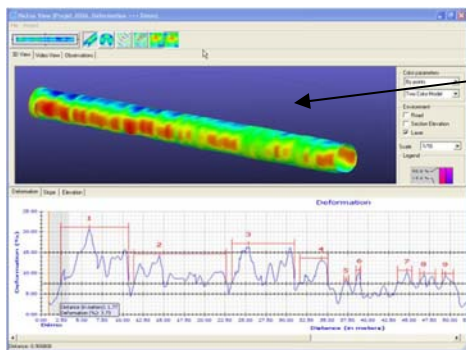
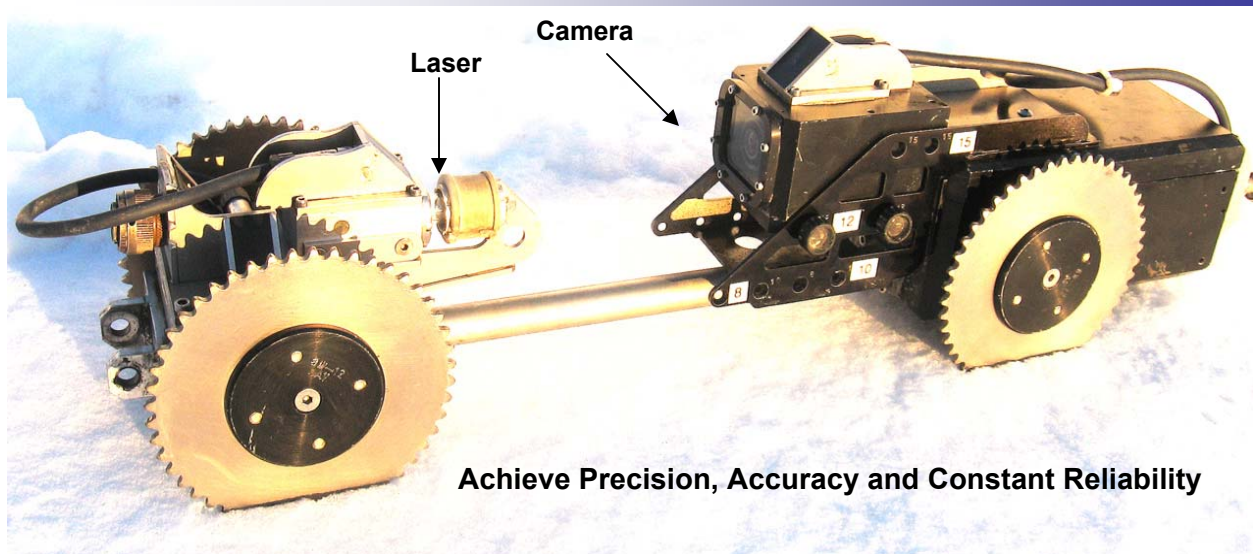


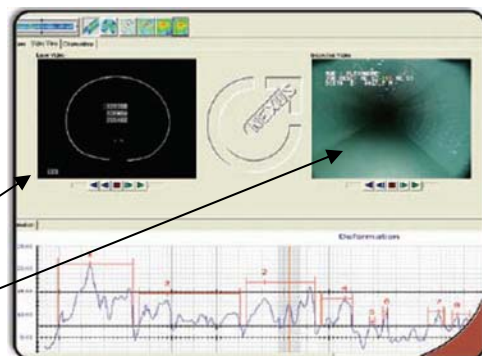
LASER PROFILER



Color 3D Visualization of Pipeline with Problem Areas

Laser View

Camera View



Features

- ✚ Fixed optical and laser triangulation for +/- 0.25% accuracy
- ✚ 99.9% repeatability for inspection comparison
- ✚ 60,000 measurements taken per second
- ✚ Able to profile pipes that contain up to 45% water
- ✚ 2000 radial measurement points per profile
- ✚ Data analyzed and reports generated by professional data analysis center
- ✚ Capable of profiling 8 – 48" pipe
- ✚ Only requires a single pass through the pipeline to complete profile

RS Technical Services Inc.

Design and Manufacture of Video Pipeline Inspection Systems

800-767-1974

Fax: 707-778-1981

sales.info@rstechserv.com

Reliability
Satisfaction
Technology's Leading Edge

www.rstechserv.com

LASER PROFILER

Specifications

Triangulation:	+/- .25% of pipe diameter
Optic System:	Fixed
Laser:	Fixed
Measurements per Second:	60,000
Points Measured:	2000
Dimensions:	27" L x 5.75" W
Weight:	26 lbs.

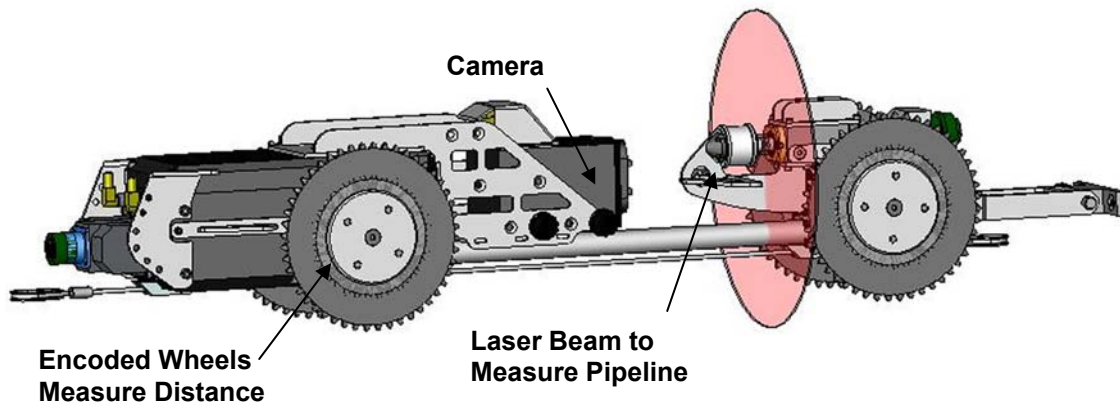
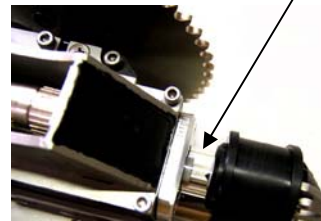
Compatibility

Single and Multi Conductor Systems

Optional

Extension Kits for 18-48" pipelines

Detail of Laser



Reliability
Satisfaction
Technology's Leading Edge

Design and Manufacture of Video Pipeline Inspection Systems

800-767-1974

Fax: 707-778-1981

sales.info@rstechserv.com

www.rstechserv.com