



Easyloc™ Cam

The Easyloc Cam is specially designed for the location of Sewer TV Cameras. The 3 frequencies (512 Hz, 640 Hz, and 33 kHz) are the most common and are all supported by the Easyloc Cam.

Easyloc Cam is a welcome economical and technical solution to utility locating incorporating a rugged housing, automatic digital display and high quality features for greater productivity at lower operational costs. As a single active frequency locating instrument, the Easyloc employs the proven 33 kHz frequency for most locating applications. Additional functionality is found in the highly sensitive power (50/60 Hz + harmonics) modes for line avoidance at utility construction sites. Depth measurement is taken with the press of a button in all modes of operation (active and passive).

The Easyloc Cam's intuitive well-organized receiver display is an indicator of a superior design that meets user demands. All functions are quickly understood and within reach. The large graphical display of signal strength indicates the maximum signal strength with a visual marker. Together with the audio signal and automatic sensitivity control, the operator can quickly confirm the utility location with greater speed and precision.

- Fast and precise location of Sewer TV Cameras
- Three active frequencies - 512 Hz, 640 Hz and 33 kHz frequency
- Automatic depth measurement at the push of a button
- Automatic sensitivity control
- Passive Frequency 50/60 Hz
- Depth measurements in all modes – active and passive
- Continuous signal strength display with maximum marker
- Peak indicator "Easy Locate"
- Audio output with volume control
- Dual sensors for auto backlight
- Auto off function – saves batteries

EASYLOC RECEIVER

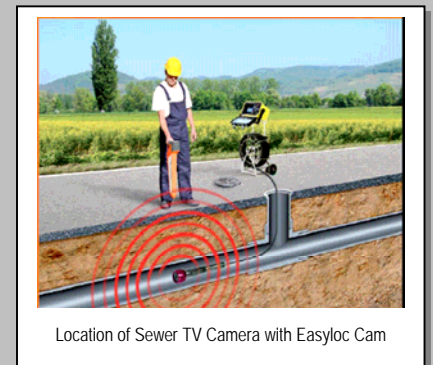
Frequency range: 512 Hz (USA), 640 Hz (Intl), and 33kHz
Passive frequency: 50/60 Hz (power)
Depth sensitivity: 11 inches to 23 feet (0.3 m to 7 m); +/-5% under normal conditions
Depth measurement: Up to 23 ft. or 276 in. (7 m)
Operational time: > 40 hours
Power supply: AA Alkaline (10 x IEC R6 1.5 V)
Temperature range Operation:
- 4 °C to +70 °C
(-20 °C to +55 °C),
Temperature range Storage:
- 40 °F to +158 °F
(-40 °C to +70 °C)
Weight 5.5 lb (2.5 kg)
Dimensions: max. 26.4 x 10.2 x 3.9 in (67 x 26 x 10 cm)
Protection category: IP 56

STANDARD EQUIPMENT

Easyloc receiver: Easyloc receiver, operating manual and training CD.
Easyloc CAM Soft carrying bag.

ACCESSORIES

Pipeline Transmitter Sonde -Self powered, to locate non-metallic pipes.



Location of Sewer TV Camera with Easyloc Cam



SERVICE CENTER, SALES AND TECHNICAL SUPPORT INFORMATION

Corporate Headquarters
3251 Olcott Street
Santa Clara, CA 95054
800-446-3392
408-734-1400 Direct
408-734-1415 Fax
www.metrotech.com
sales@metrotech.com

Metrotech Eastern U.S. Service Center
5211 Linbar Drive, Suite 503
Nashville, TN 37211
800-624-6210
615-366-7323 Direct
615-360-9855 Fax
nashville@metrotech.com

Metrotech European Service Center
Seba KMT
Dr. Herbert Iann St. 6
96148 Baunach, Germany
+49 9 544 680
+49 9 544 2273 Fax
service@sebakmt.com